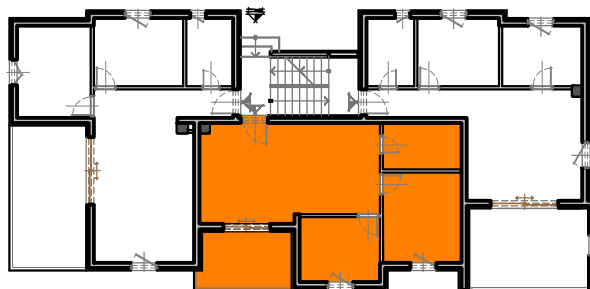


PRIZEMLJE **STAN S-2**

7. DNEVNI BORAVAK, BLAGOVAONICA

I KUHINJA, ker. pl.

P = 25.75 m²

8. SOBA, parket

P = 10.55 m²

9. SOBA, parket

P = 7.75 m²

10. KUPAONICA, ker. pl.

P = 5.45 m²

11. LOGGIA, ker. pl.

P_n = 6.00 m²**UKUPNO STAN S-2****P = 55.50 m²**