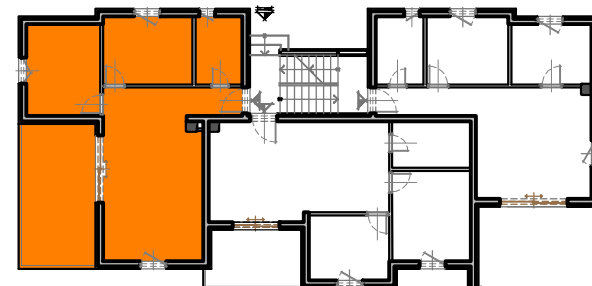


**PRIZEMLJE** 



**STAN S-1**

1. DNEVNI BORAVAK, BLAGOVAONICA

I KUHINJA, ker. pl.

P = 21.30 m<sup>2</sup>

2. SOBA, parket

P = 10.10 m<sup>2</sup>

3. SOBA, parket

P = 9.05 m<sup>2</sup>

4. KUPAONICA, ker. pl.

P = 4.75 m<sup>2</sup>

5. PREDSOBLJE, ker. pl.

P = 5.90 m<sup>2</sup>

6. NATKRIVENA TERASA, ker. pl.

P<sub>n</sub> = 8.30 m<sup>2</sup>

**UKUPNO STAN S-1**

**P = 59.40 m<sup>2</sup>**