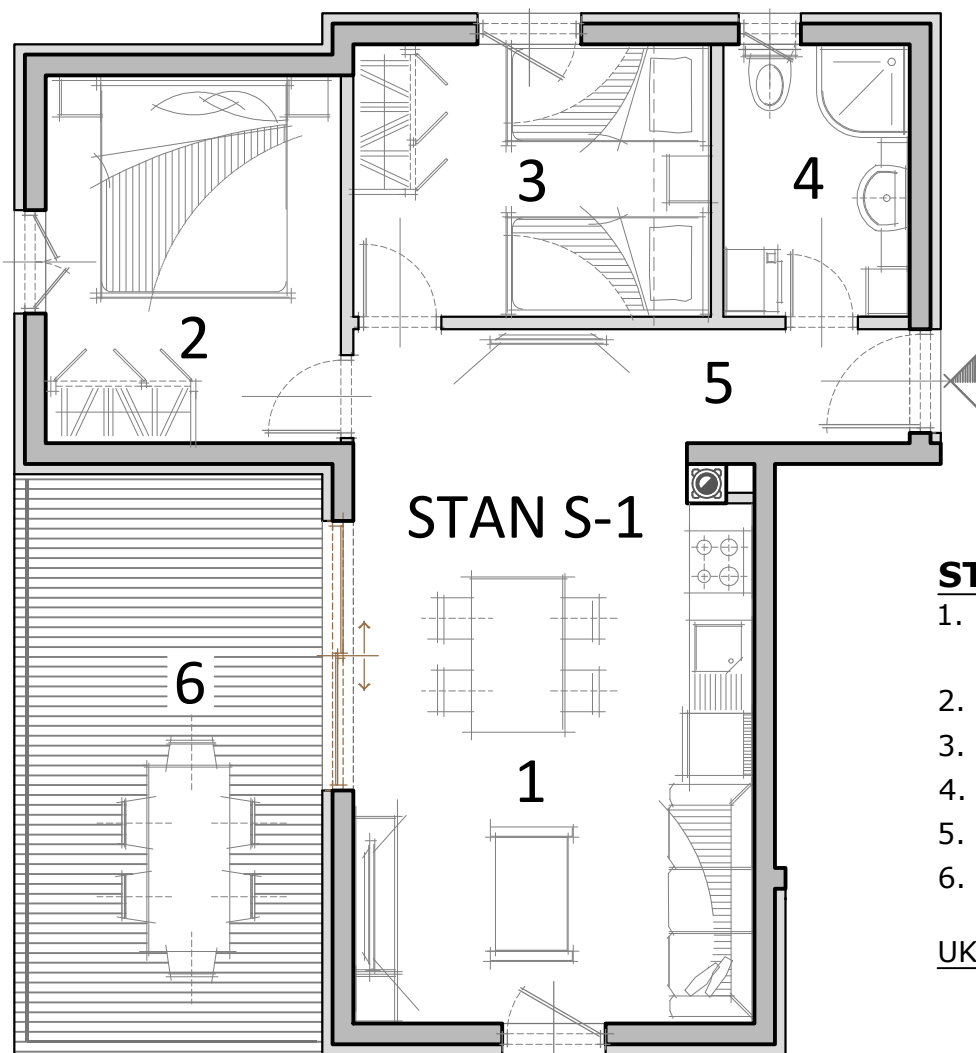


STAMBENO POSLOVNA ZGRADA MANDRE

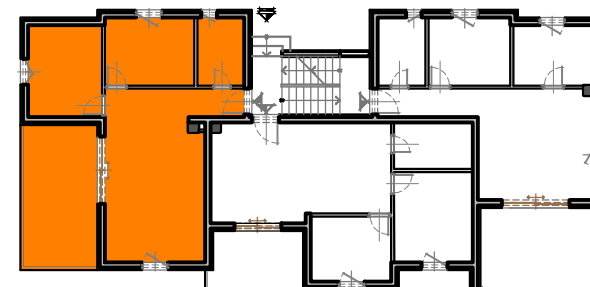


KATALOG STANOVA

BRALA
PROJEKT



PRIZEMLJE 



STAN S-1

STAN S-1

1. DNEVNI BORAVAK, BLAGOVAONICA

I KUHINJA, ker. pl.

P = 21.30 m²

2. SOBA, parket

P = 10.10 m²

3. SOBA, parket

P = 9.05 m²

4. KUPAONICA, ker. pl.

P = 4.75 m²

5. PREDSOBLJE, ker. pl.

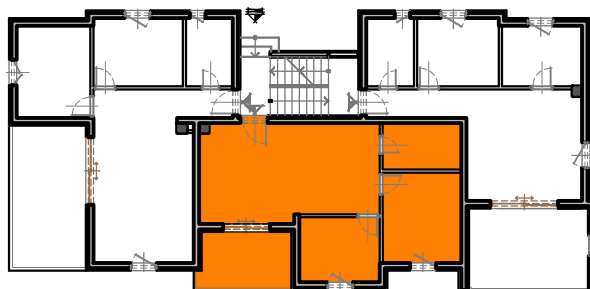
P = 5.90 m²

6. NATKRIVENA TERASA, ker. pl.

P_n = 8.30 m²

UKUPNO STAN S-1

P = 59.40 m²

PRIZEMLJE **STAN S-2**

7. DNEVNI BORAVAK, BLAGOVAONICA

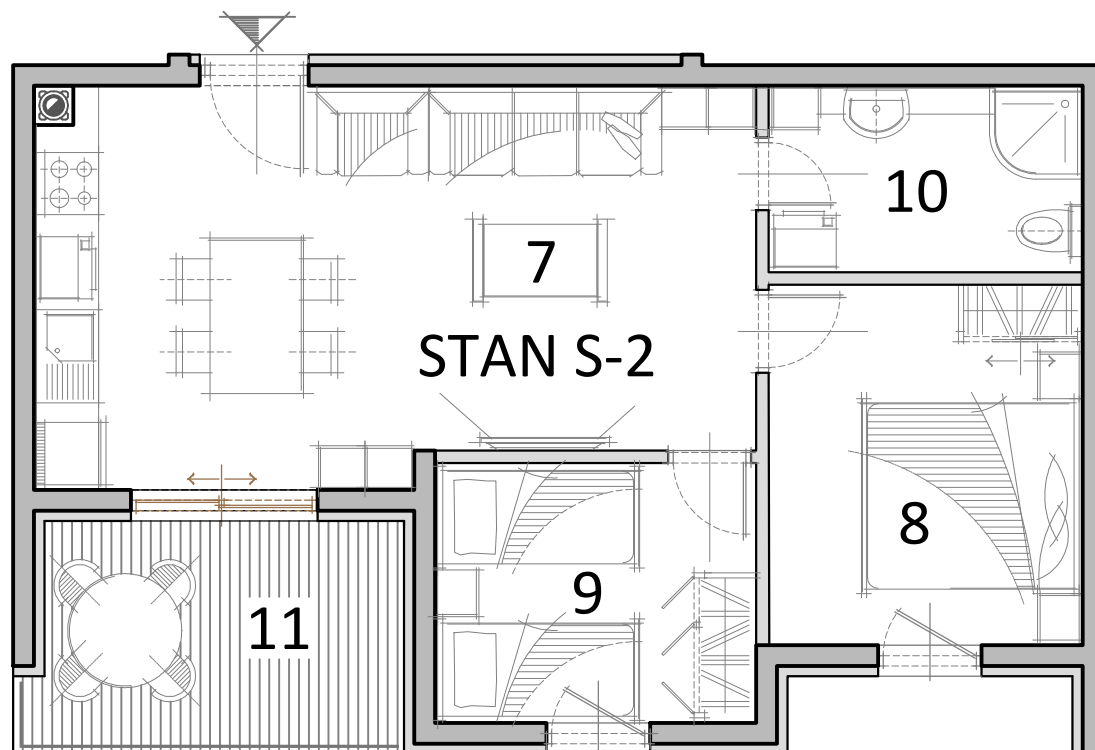
I KUHINJA, ker. pl.

8. SOBA, parket

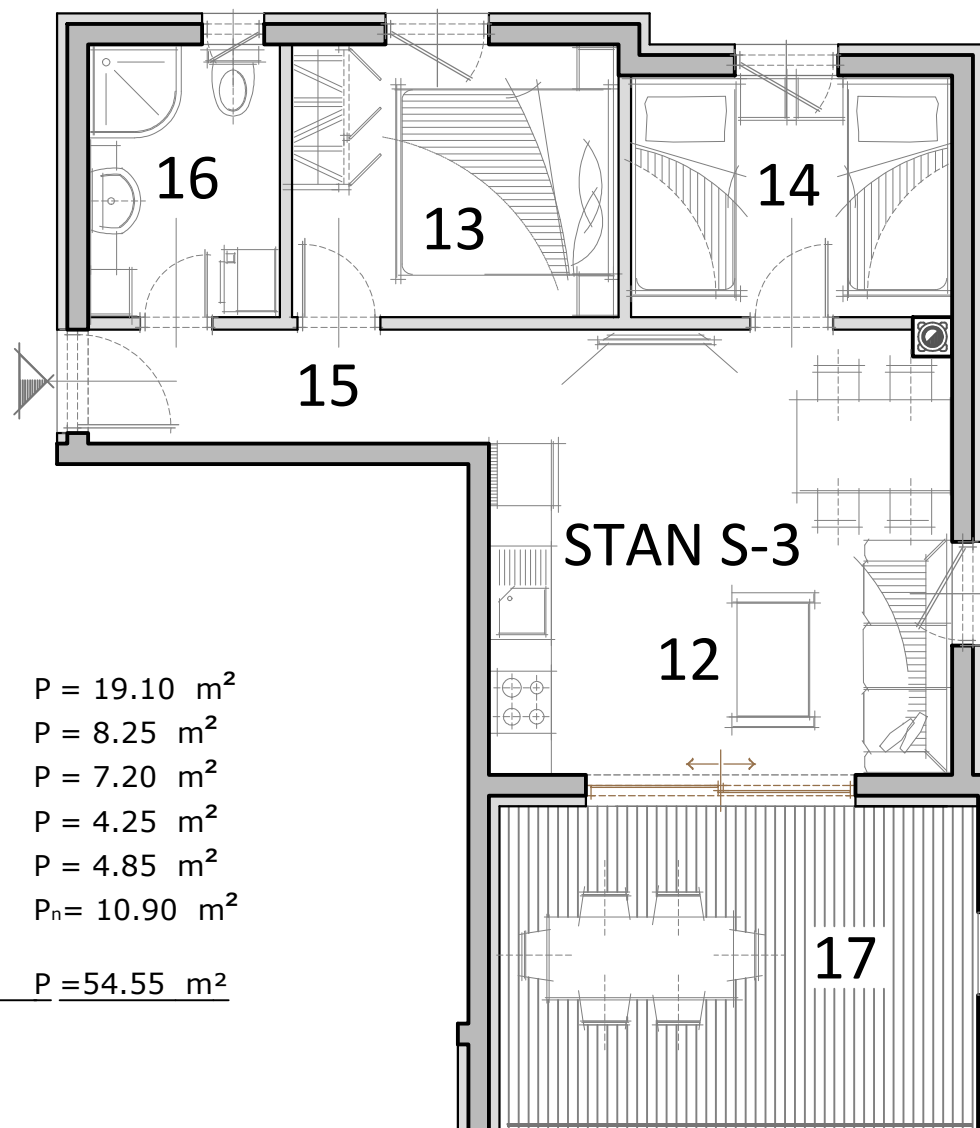
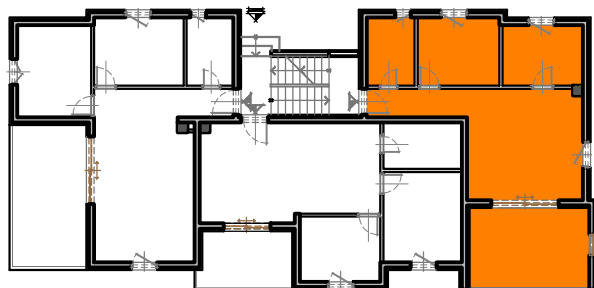
9. SOBA, parket

10. KUPAONICA, ker. pl.

11. LOGGIA, ker. pl.

P = 25.75 m²P = 10.55 m²P = 7.75 m²P = 5.45 m²P_n = 6.00 m²UKUPNO STAN S-2P = 55.50 m²

PRIZEMLJE 



STAN S-3

12. DNEVNI BORAVAK, BLAGOVAONICA
I KUHINJA, ker. pl.

13. SOBA, parket

14. SOBA, parket

15. PREDSOBLJE, ker. pl.

16. KUPAONICA, ker. pl.

17. LOGGIA, ker. pl.

P = 19.10 m²

P = 8.25 m²

P = 7.20 m²

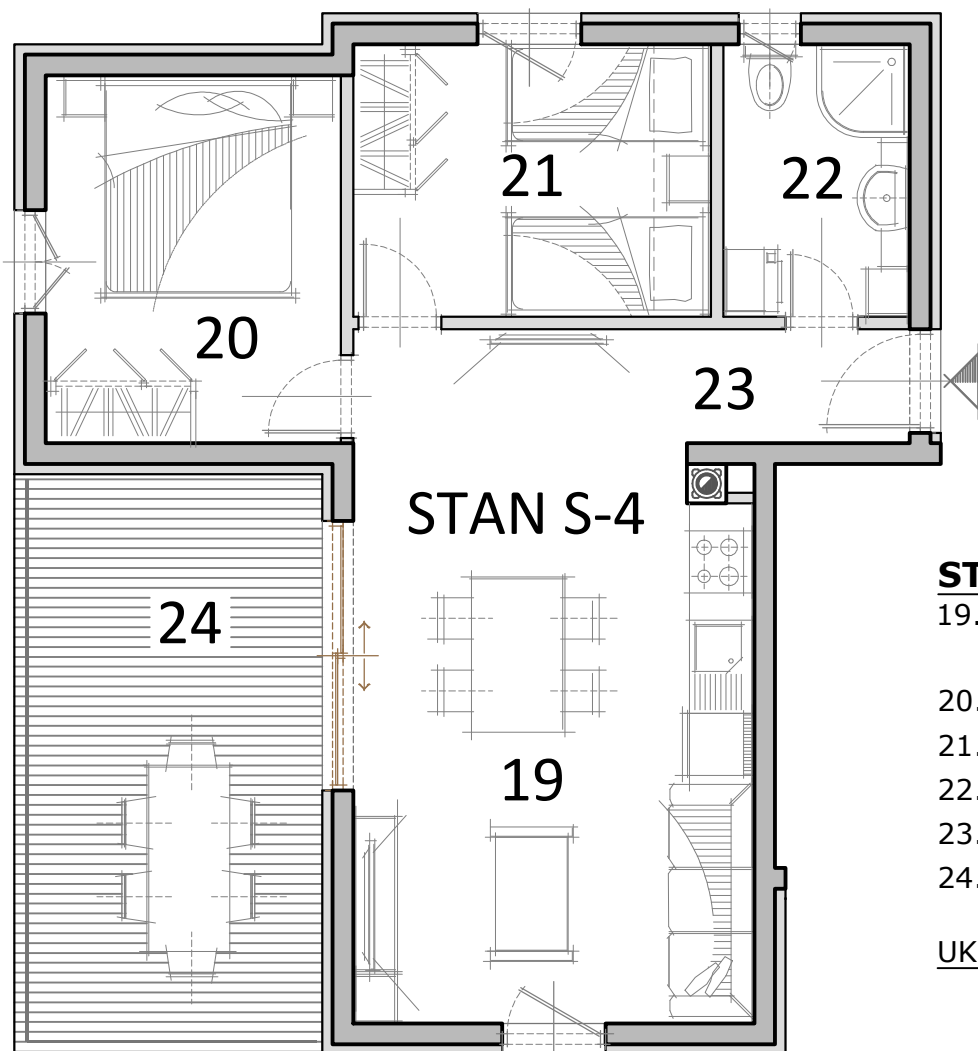
P = 4.25 m²

P = 4.85 m²

P_n = 10.90 m²

UKUPNO STAN S-3

P = 54.55 m²



STAN S-4

19. DNEVNI BORAVAK, BLAGOVAONICA

I KUHINJA, ker. pl.

P = 21.30 m²

20. SOBA, parket

P = 10.10 m²

21. SOBA, parket

P = 9.05 m²

22. KUPAONICA, ker. pl.

P = 4.75 m²

23. PREDSOBLJE, ker. pl.

P = 5.90 m²

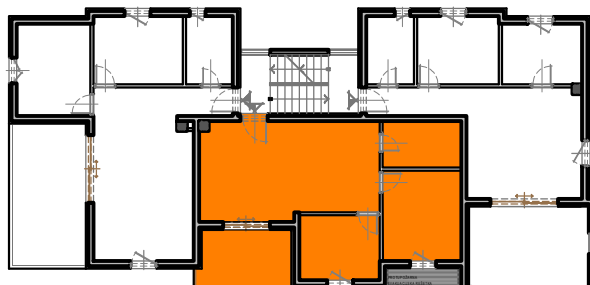
24. NATKRIVENA TERASA, ker. pl.

P_n = 8.30 m²

UKUPNO STAN S-4

P = 59.40 m²

1. KAT

**STAN S-5**

25. DNEVNI BORAVAK, BLAGOVAONICA

I KUHINJA, ker. pl.

P = 25.75 m²

26. SOBA, parket

P = 10.55 m²

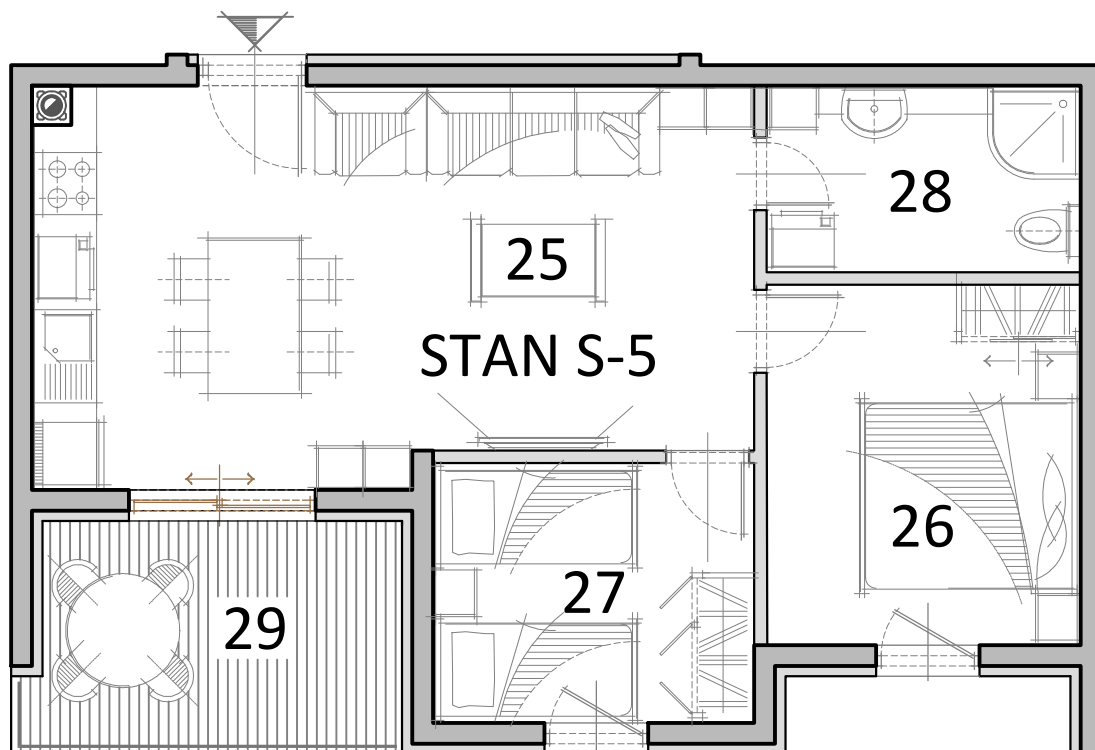
27. SOBA, parket

P = 7.75 m²

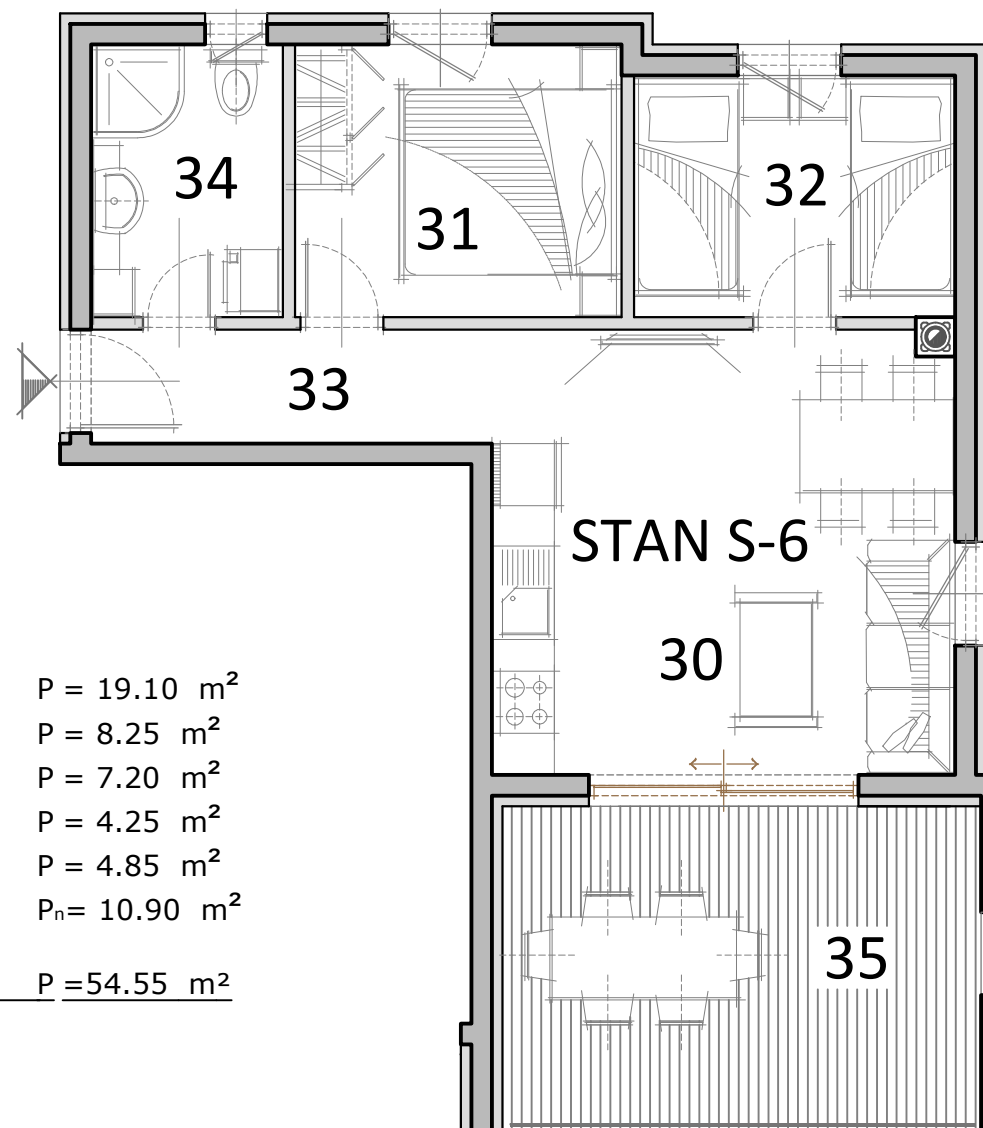
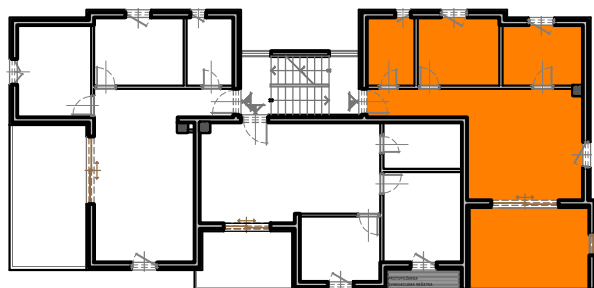
28. KUPAONICA, ker. pl.

P = 5.45 m²

29. LOGGIA, ker. pl.

P_n = 6.00 m²UKUPNO STAN S-5P = 55.50 m²

1. KAT

**STAN S-6**

30. DNEVNI BORAVAK, BLAGOVAONICA
I KUHINJA, ker. pl.

31. SOBA, parket

32. SOBA, parket

33. PREDSOBLJE, ker. pl.

34. KUPAONICA, ker. pl.

35. LOGGIA, ker. pl.

P = 19.10 m²

P = 8.25 m²

P = 7.20 m²

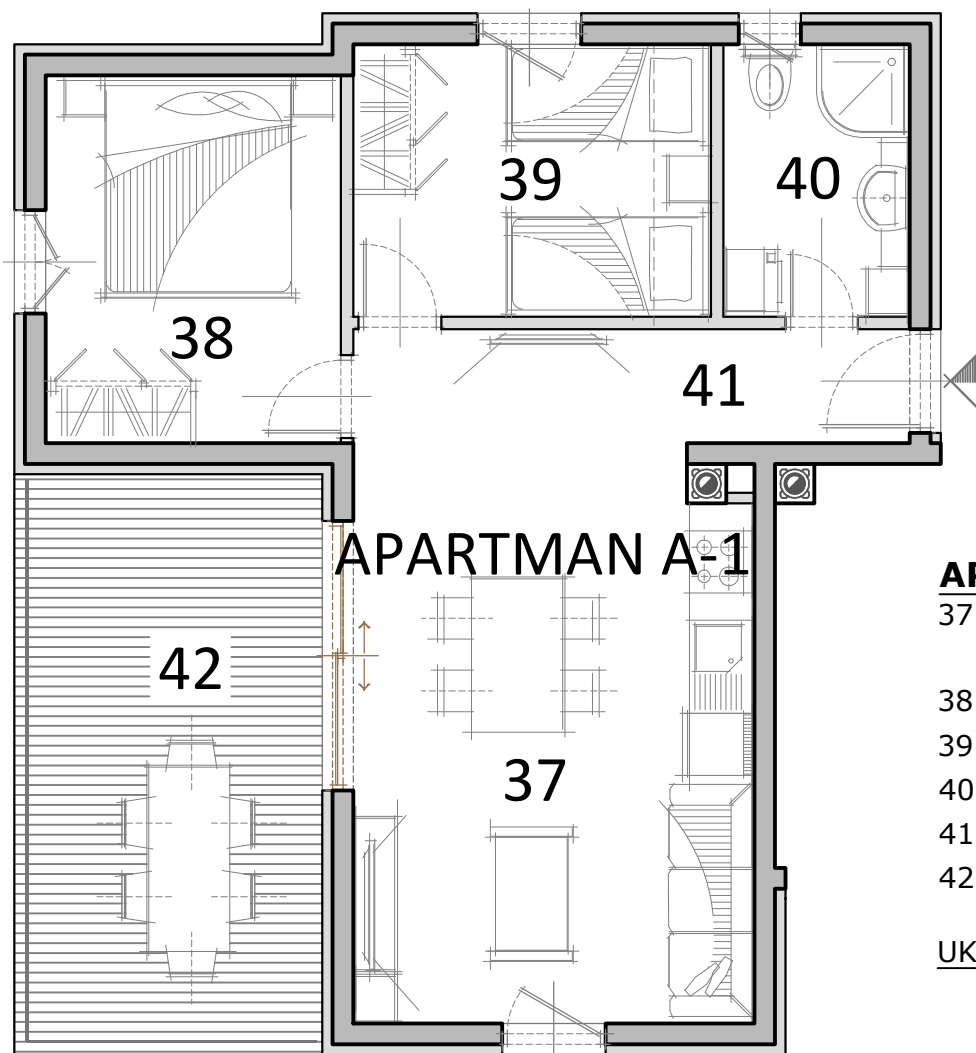
P = 4.25 m²

P = 4.85 m²

P_n = 10.90 m²

UKUPNO STAN S-6

P = 54.55 m²



APARTMAN A-1

37. DNEVNI BORAVAK, BLAGOVAONICA

I KUHINJA, ker. pl.

P = 21.30 m²

38. SOBA, parket

P = 10.10 m²

39. SOBA, parket

P = 9.05 m²

40. KUPAONICA, ker. pl.

P = 4.75 m²

41. PREDSOBLJE, ker. pl.

P = 5.90 m²

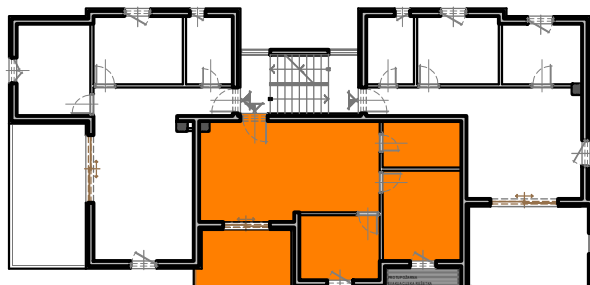
42. NATKRIVENA TERASA, ker. pl.

P_n = 8.30 m²

UKUPNO APARTMAN A-1

P = 59.40 m²

2. KAT

**STAN S-7**

43. DNEVNI BORAVAK, BLAGOVAONICA

I KUHINJA, ker. pl.

P = 25.75 m²

44. SOBA, parket

P = 10.55 m²

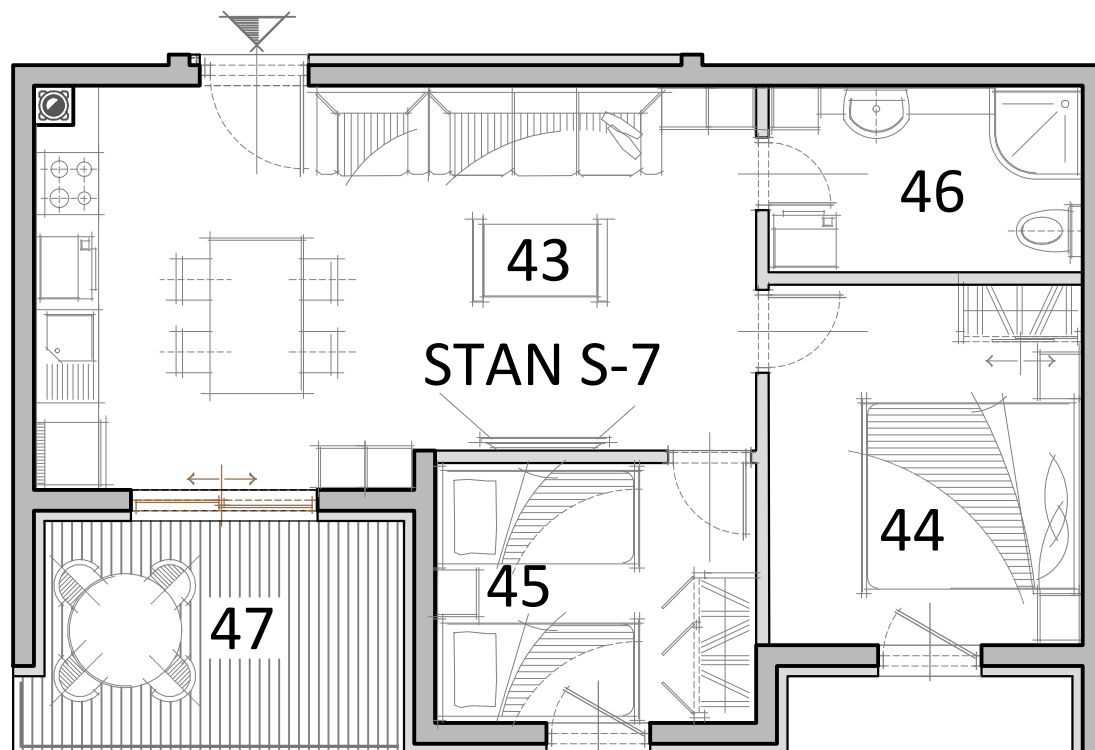
45. SOBA, parket

P = 7.75 m²

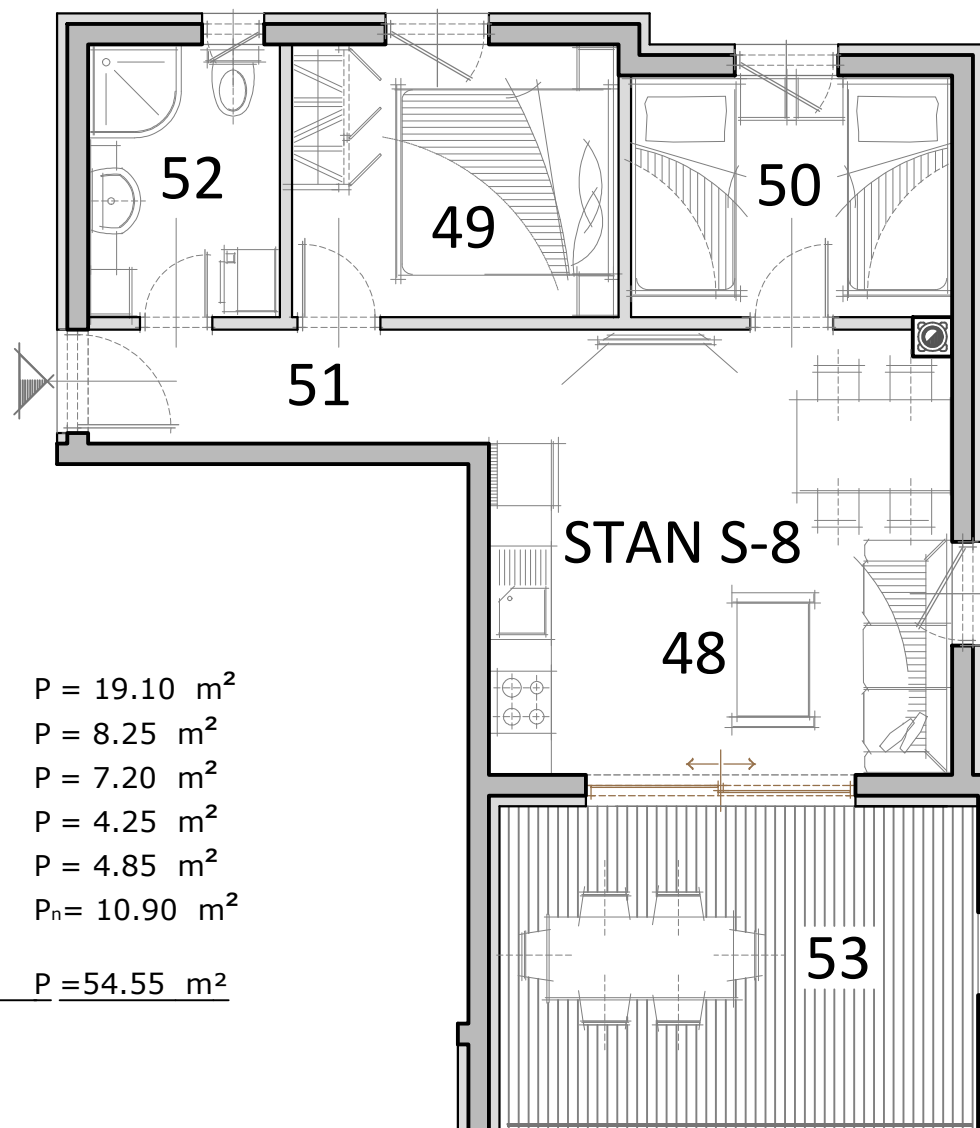
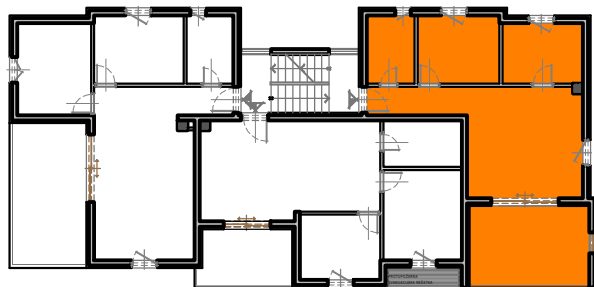
46. KUPAONICA, ker. pl.

P = 5.45 m²

47. LOGGIA, ker. pl.

P_n = 6.00 m²UKUPNO STAN S-7P = 55.50 m²

2. KAT

**STAN S-8**

48. DNEVNI BORAVAK, BLAGOVAONICA

I KUHINJA, ker. pl.

49. SOBA, parket

50. SOBA, parket

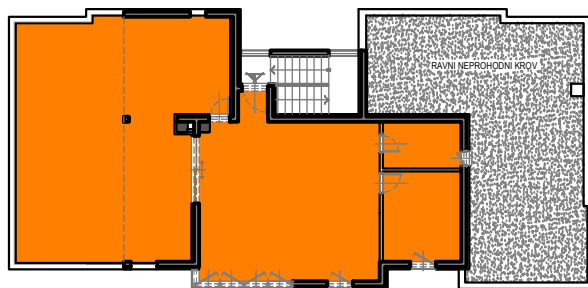
51. PREDSOBLJE, ker. pl.

52. KUPAONICA, ker. pl.

53. LOGGIA, ker. pl.

P = 19.10 m²P = 8.25 m²P = 7.20 m²P = 4.25 m²P = 4.85 m²P_n = 10.90 m²UKUPNO STAN S-8P = 54.55 m²

POTKROVLJE



APARTMAN A-2

55. DNEVNI BORAVAK, BLAGOVAONICA

I KUHINJA, ker. pl.

P = 44.05 m²

56. SOBA, parket

P = 10.55 m²

57. KUPAONICA, ker. pl.

P = 5.45 m²

58. LOGGIA, ker. pl.

P_n = 22.35 m²

59. NENATKRIVENA TERASA, ker. pl.

P_n = 9.75 m²

UKUPNO APARTMAN A-2

P = 92.15 m²

