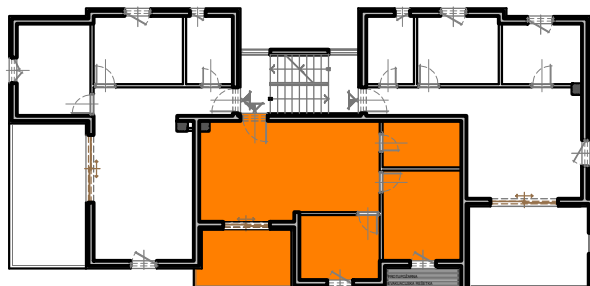


2. KAT



STAN S-7

43. DNEVNI BORAVAK, BLAGOVAONICA

I KUHINJA, ker. pl.

P = 25.75 m²

44. SOBA, parket

P = 10.55 m²

45. SOBA, parket

P = 7.75 m²

46. KUPAONICA, ker. pl.

P = 5.45 m²

47. LOGGIA, ker. pl.

P_n = 6.00 m²

UKUPNO STAN S-7

P = 55.50 m²

